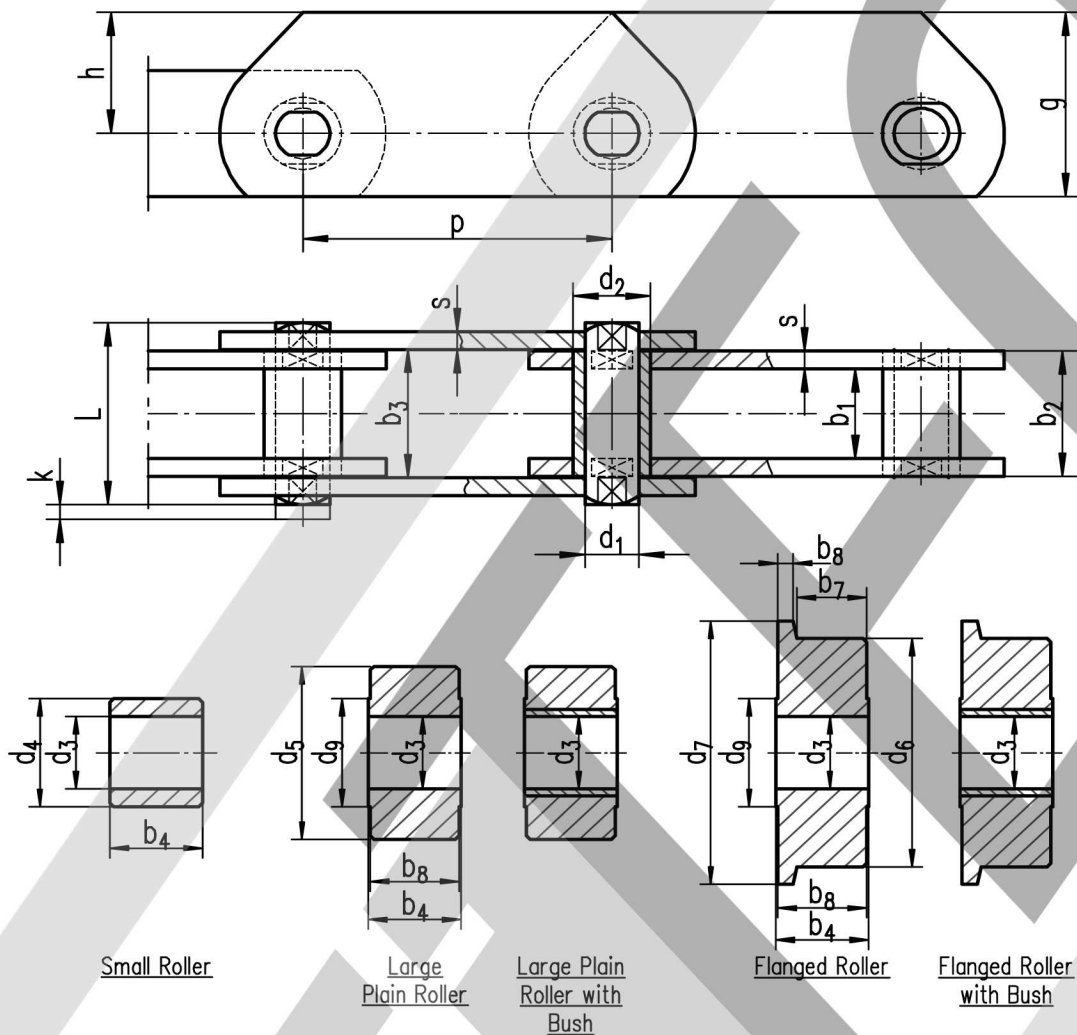


Conveyor Chain with Deep Links / Style "MT" - DIN 8167 - (March 1986)



Measurements

DIN	Available Pitches										b_1 min. [mm]	b_2 max. [mm]	b_3 min. [mm]	d_1 [mm]	d_2 [mm]	s [mm]	g [mm]	h [mm]	L max. [mm]	k max. [mm]	Breaking Load min.
	40	50	63	80	100	125	160	200	250	315											
MT 20	X	X	X	X	X	X	X				16	22	22,2	6	9	2,5	25	16	35	7	20.000
MT 28		X	X	X	X	X	X	X			18	25	25,2	7	10	3	30	20	40	8	28.000
MT 40			X	X	X	X	X	X	X		20	28	28,3	8,5	12,5	3,5	35	22,5	45	9	40.000
MT 56			X	X	X	X	X	X	X		24	33	33,3	10	15	4	45	30	52	10	56.000
MT 80				X	X	X	X	X	X	X	28	39	39,4	12	18	5	50	32,5	62	12	80.000
MT 112				X	X	X	X	X	X	X	32	45	45,5	15	21	6	60	40	73	14	112.000
MT 160					X	X	X	X	X	X	37	52	52,5	18	25	7	70	45	85	16	160.000
MT 224						X	X	X	X	X	43	60	60,6	21	30	8	90	60	98	18	224.000

Measurements of Rollers

DIN	b_4 max. [mm]	b_5 max. [mm]	b_7 min. [mm]	b_8 max. [mm]	d_3 min. [mm]	d_4 max. [mm]	d_5 max. [mm]	d_6 max. [mm]	d_7 max. [mm]	d_9 ca. [mm]
MT 20	15	14	11	2,5	9,1	12,5	25	25	30	26
MT 28	17	16	12,5	3	10,1	15	30	30	36	30
MT 40	19	18	13,5	3,5	12,6	18	36	36	42	35
MT 56	23	22	17	4	15,1	21	42	42	50	40
MT 80	27	26	20	5	18,1	25	50	50	60	45
MT 112	31	29	22	6	21,1	30	60	60	70	50
MT 160	36	34	25,5	7	25,2	36	70	70	85	60
MT 224	42	40	30	8	30,2	42	85	85	100	70