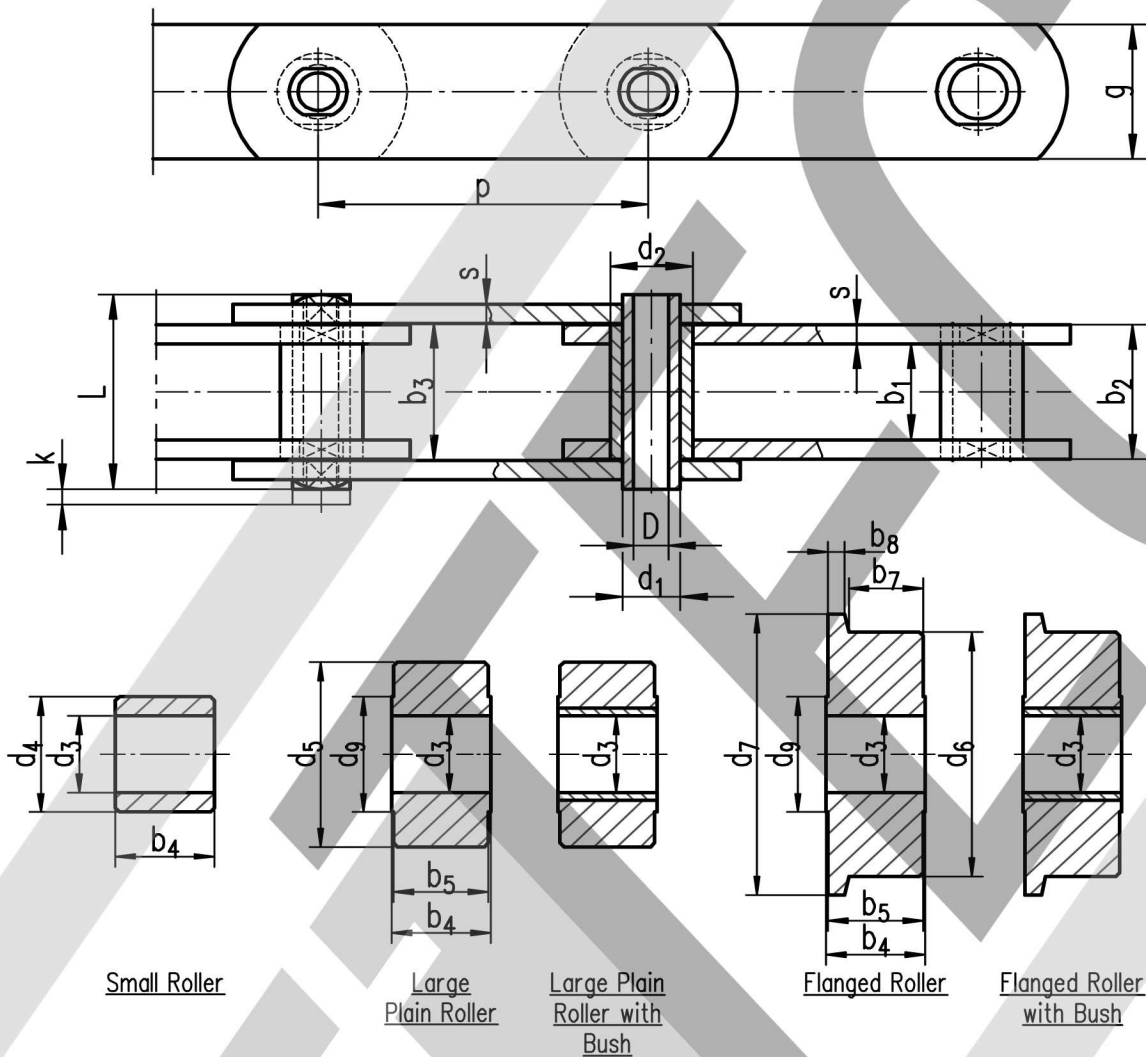


# Conveyor Chains with Hollow Pins / Style "MC" - DIN 8168 - (March 1986)



## Measurements

Available Pitches

DIN	p										b <sub>1</sub> min. [mm]	b <sub>2</sub> max. [mm]	b <sub>3</sub> min. [mm]	d <sub>1</sub> [mm]	d <sub>2</sub> [mm]	D min. [mm]	s [mm]	g [mm]	L max. [mm]	k max. [mm]	Breaking Load min.
	40	50	63	80	100	125	160	200	250	315											
MC 28		X	X	X	X	X	X				20	28	28,3	13	17,5	8,2	3,5	25	42	2,5	28.000
MC 56			X	X	X	X	X	X	X		24	33	33,3	15,5	21	10,2	4	35	48	3	56.000
MC 112				X	X	X	X	X	X	X	32	45	45,5	22	29	14,3	6	50	67	3	112.000
MC 224					X	X	X	X	X	X	43	60	60,6	31	41	20,3	8	70	90	3	224.000

## Measurements of Rollers

DIN	b <sub>4</sub> max. [mm]	b <sub>5</sub> max. [mm]	b <sub>7</sub> min. [mm]	b <sub>8</sub> max. [mm]	d <sub>3</sub> min. [mm]	d <sub>4</sub> max. [mm]	d <sub>5</sub> max. [mm]	d <sub>6</sub> max. [mm]	d <sub>7</sub> max. [mm]	d <sub>9</sub> ca. [mm]
MC 28	17	16	12,5	3	10,1	15	30	30	36	30
MC 56	23	22	17	4	15,1	21	42	42	50	40
MC 112	31	29	22	6	21,1	30	60	60	70	50
MC 224	42	40	30	8	30,2	42	85	85	100	70